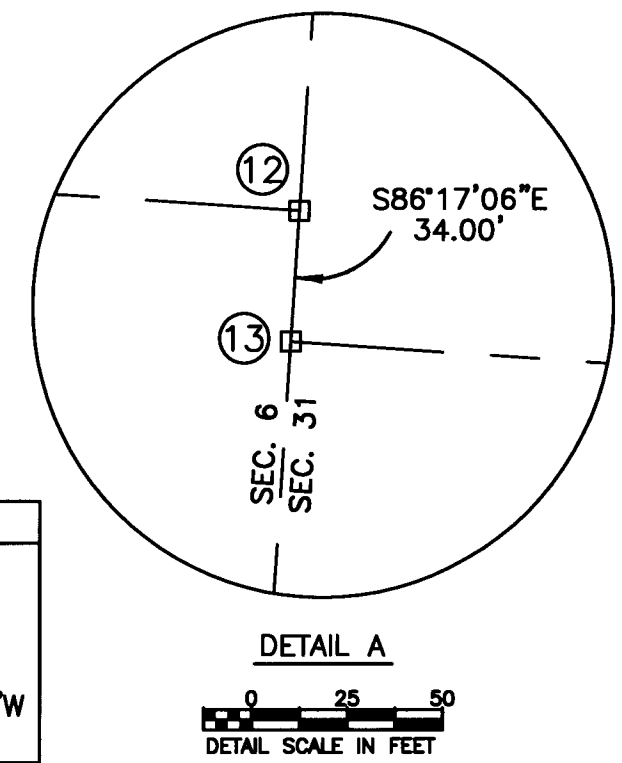
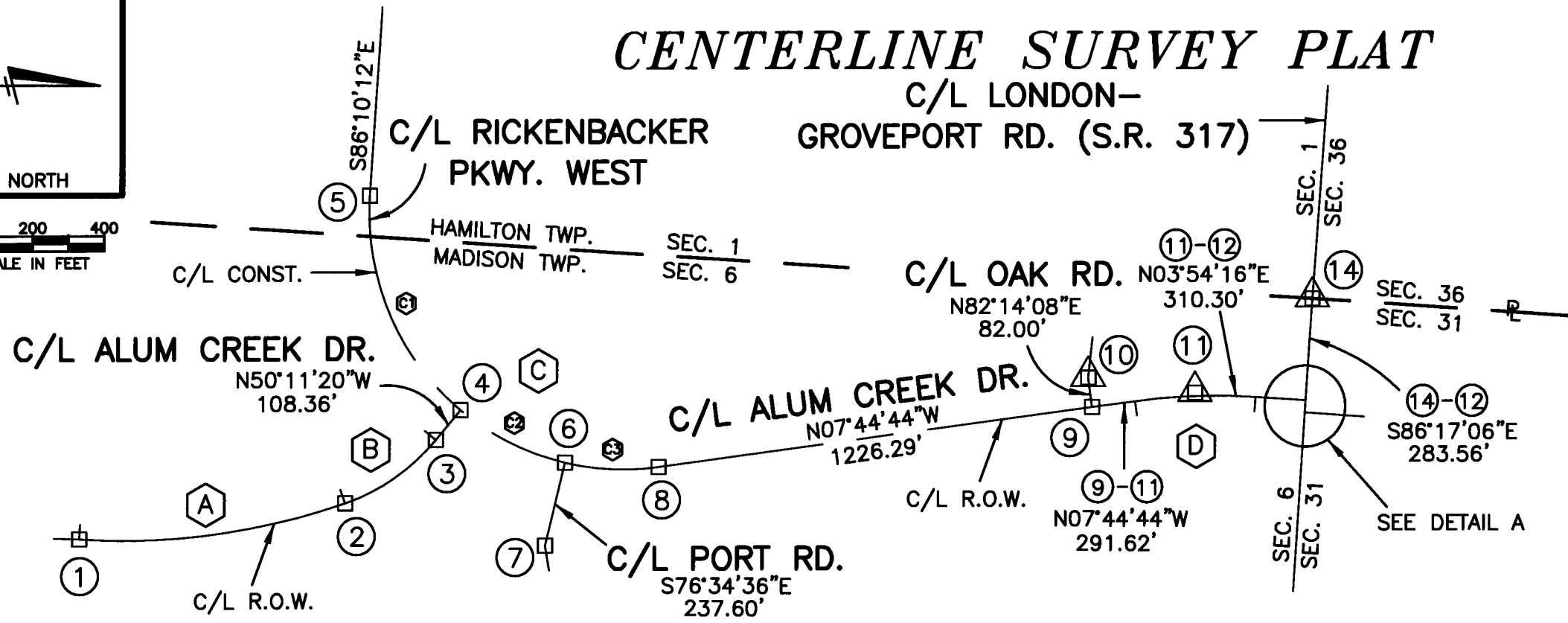


CENTERLINE SURVEY PLAT

C/L LONDON-
GROVEPORT RD. (S.R. 317)

ALUM CREEK DR., CO. RD. #392
LONDON-GROVEPORT RD. (S.R. 317)
TO DAVID HARRIS (E AVENUE)

FRANKLIN COUNTY, OHIO
HAMILTON & MADISON TOWNSHIPS
CONGRESS LANDS (EAST OF THE SCIOTO)
SEC. 1, T3N, R22W
SEC. 6, T10N, R21W
SEC. 31, T11N, R21W
SEC. 36, T4N, R22W



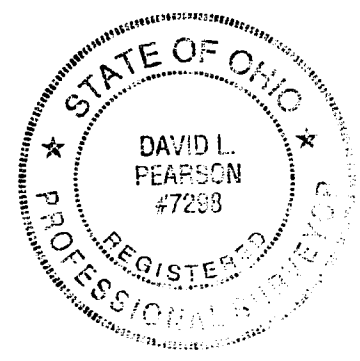
CURVE A	CURVE B	CURVE C	CURVE C1	CURVE C2	CURVE C3	CURVE D
$\Delta=22^{\circ}43'12''$ R=1909.27' L=757.10' T=383.59' CHD.BR.=N07°34'21"W CHD.=752.15'	$\Delta=31^{\circ}15'11''$ R=575.04' L=313.66' T=160.84' CHD.BR.=N34°33'35"W CHD.=309.79'	$\Delta=101^{\circ}34'32''$ R=716.20' L=1269.70' T=877.77' CHD.BR.=N43°02'26"E CHD.=1109.84'	$\Delta=54^{\circ}01'13''$ R=716.20' L=675.25' T=365.08' CHD.BR.=N66°48'58"E CHD.=650.52'	$\Delta=26^{\circ}23'24''$ R=716.20' L=329.88' T=167.91' CHD.BR.=N26°36'52"E CHD.=326.96'	$\Delta=21^{\circ}09'55''$ R=716.20' L=264.57' T=133.81' CHD.BR.=N02°50'16"E CHD.=263.06'	$\Delta=11^{\circ}39'00''$ R=1668.94' L=339.35' T=170.26' CHD.BR.=N01°55'14"W CHD.=338.76'

SURVEY CONTROL POINTS

NO.	DESCRIPTION	OFFSETS FROM C/L	ID. NO.
1	FRA. COUNTY MON. ASSEM., P.T.	C/L	FCGS 5946
2	FRA. COUNTY MON., P.C.C.	C/L	FCGS 5945
3	FRA. COUNTY MON., P.C.	C/L	FCGS 5943
4	FRA. COUNTY MON. ASSEM., INT./P.O.C.	C/L CONST./R.O.W.	FCGS 5944
5	FRA. COUNTY MON., P.C.	C/L CONST.	FCGS 5941
6	FRA. COUNTY MON. ASSEM., INT./P.O.C.	C/L	FCGS 5942
7	FRA. COUNTY MON. ASSEM., P.C.	C/L	FCGS 5950
8	FRA. COUNTY MON., P.T.	C/L	FCGS 5939
9	FRA. COUNTY MON. ASSEM., INT./P.O.T.	C/L	FCGS 5953
10	FRA. COUNTY MON. ASSEM., P.I.	C/L	FCGS 5954
11	FRA. COUNTY MON. ASSEM., P.I.	C/L	FCGS 5940
12	FRA. COUNTY MON. ASSEM., INT./P.O.T.	C/L	FCGS 5938
13	FRA. COUNTY MON. ASSEM., INT.	C/L	FCGS 2271
14	FRA. COUNTY MON. ASSEM., A.P.	C/L	FCGS 9929

LEGEND

- Δ ANGLE POINT / POINT OF INTERSECTION
- \square MONUMENT BOX ASSEMBLY / CONC. MONUMENT
- \circ SURVEY POINT FOUND (RRS, IP, PK, ETC.)
- \bullet SURVEY POINT SET (RRS, IP, PK, ETC.)
- \bigcirc STONE
- INT. INTERSECTION
- A.P. ANGLE POINT
- P.O.C. POINT ON CURVE
- P.C.C. POINT OF COMPOUND CURVE
- P.O.T. POINT ON TANGENT
- P.I. POINT OF INTERSECTION
- P.C. POINT OF CURVATURE
- P.T. POINT OF TANGENCY
- T.S. TANGENT TO SPIRAL
- S.C. SPIRAL TO CURVE
- C.S. CURVE TO SPIRAL
- S.T. SPIRAL TO TANGENT
- MON. ASSEM. MONUMENT BOX ASSEMBLY
- MON. CONCRETE MONUMENT
- R PROPERTY LINE
- C/L CENTERLINE
- SEC. SECTION LINE
- VMS VMS LINE
- CO. COUNTY LINE
- TWP. TOWNSHIP LINE



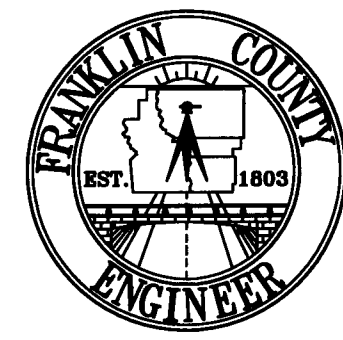
BASIS OF BEARINGS:

BEARINGS ARE BASED ON THE OHIO STATE PLANE COORDINATE SYSTEM, SOUTH ZONE AND NORTH AMERICAN DATUM OF 1983, (NSRS 2007), AS ESTABLISHED FROM A GPS SURVEY PERFORMED BY THE FRANKLIN COUNTY ENGINEER'S SURVEY DEPARTMENT IN 2010. OCCUPYING MONUMENTS "FCGS 2080", "FCGS 9962".

THIS PLAT WAS PREPARED FROM AN ACTUAL FIELD SURVEY PERFORMED BY THE FRANKLIN COUNTY ENGINEER'S OFFICE, ALONG WITH PUBLIC RECORDS ON FILE IN THE FRANKLIN COUNTY RECORDER'S OFFICE AND THE FRANKLIN COUNTY ENGINEER'S OFFICE.

David L. Pearson
DAVID L. PEARSON
OHIO REGISTERED SURVEYOR NO. 7298

01/25/2016
DATE



DATE: 01-21-16		DRAWING: 0392-01,02,03,04,05
DRAWN BY: MJR		
REVISIONS		
DATE	DESCRIPTION	BY